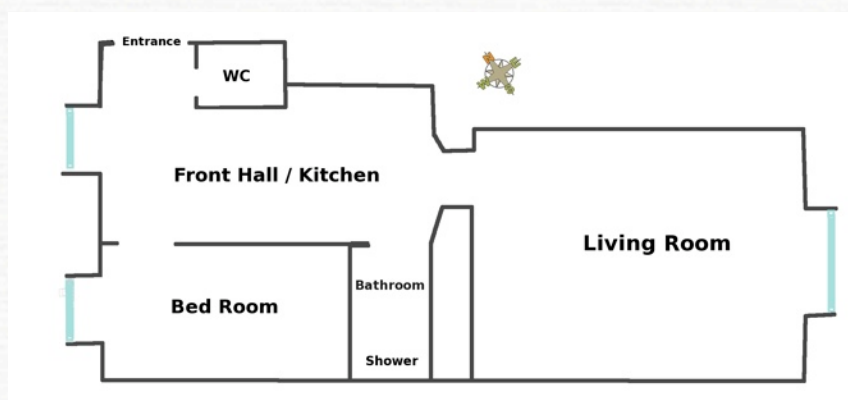
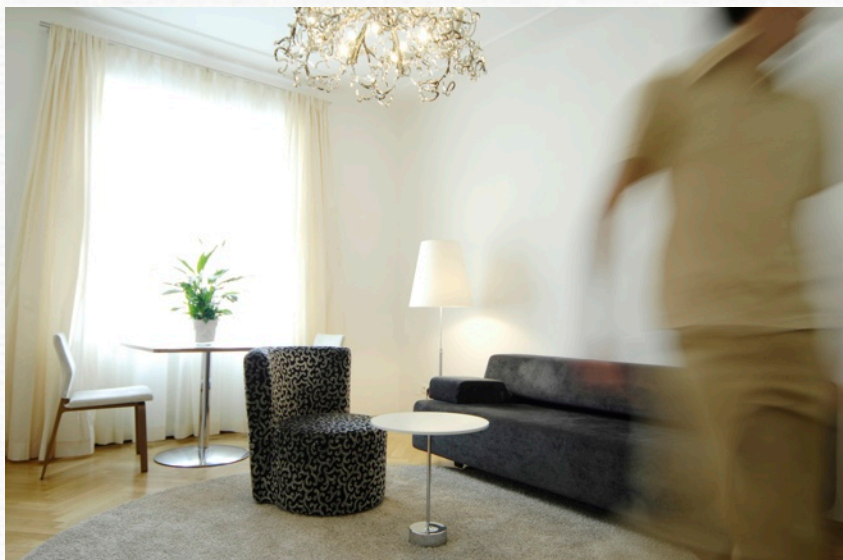


# BUSINESS APARTMENTS VIENNA

LOCATION 2: VIENNA-LANDSTRASSE (TOP 28)

## CLASSIC-APARTMENT VIENNA-LANDSTRASSE (TOP 28)



### Classic-Apartment Top 28

- 48 m<sup>2</sup>, 1 bedroom, shower
- large kitchen with 4 ceramic cooking plates, oven, dishwasher, washing machine and drier
- espresso-machine, digital-SAT
- occupancy: 1-4 persons
- view of greenery with morning and evening sun

